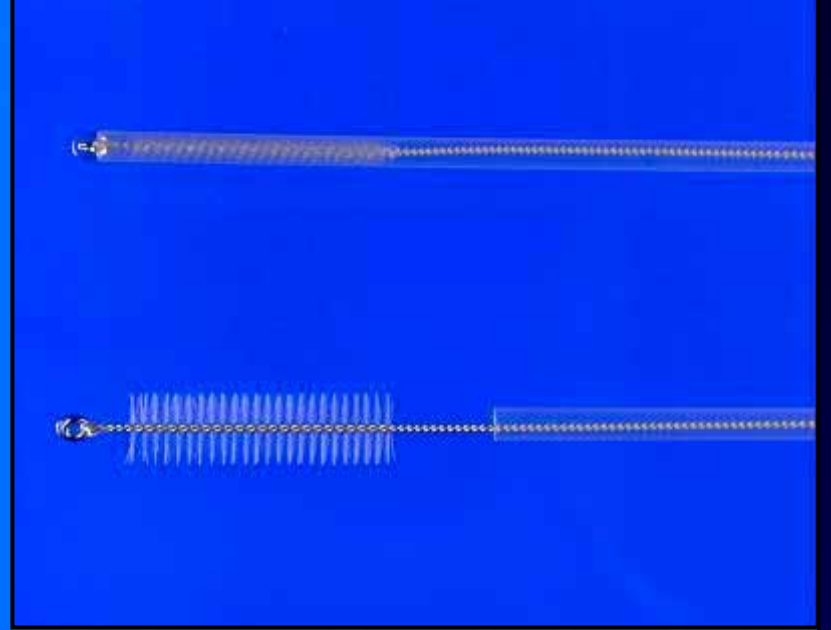
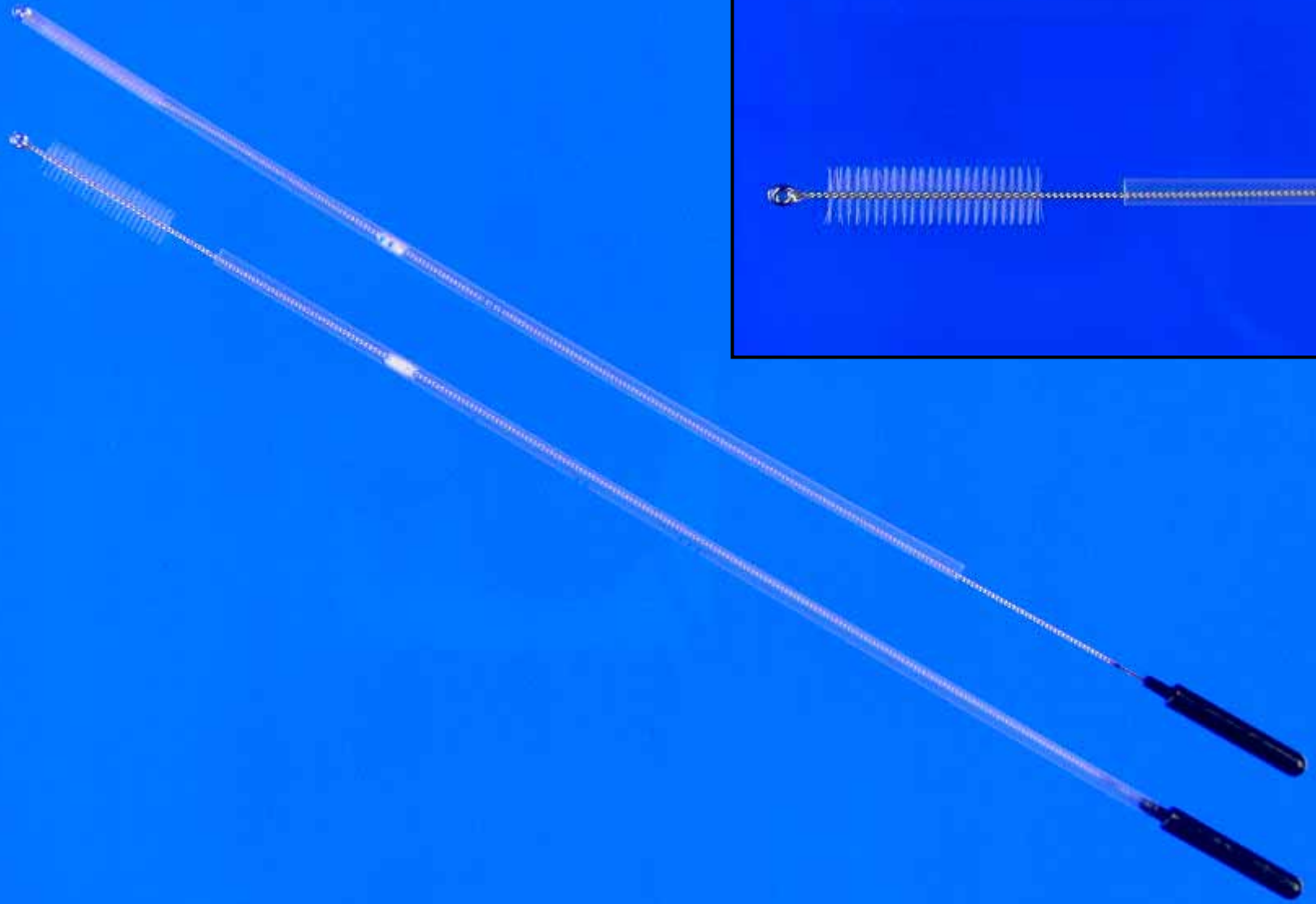


ADVANCES IN TECHNOLOGY

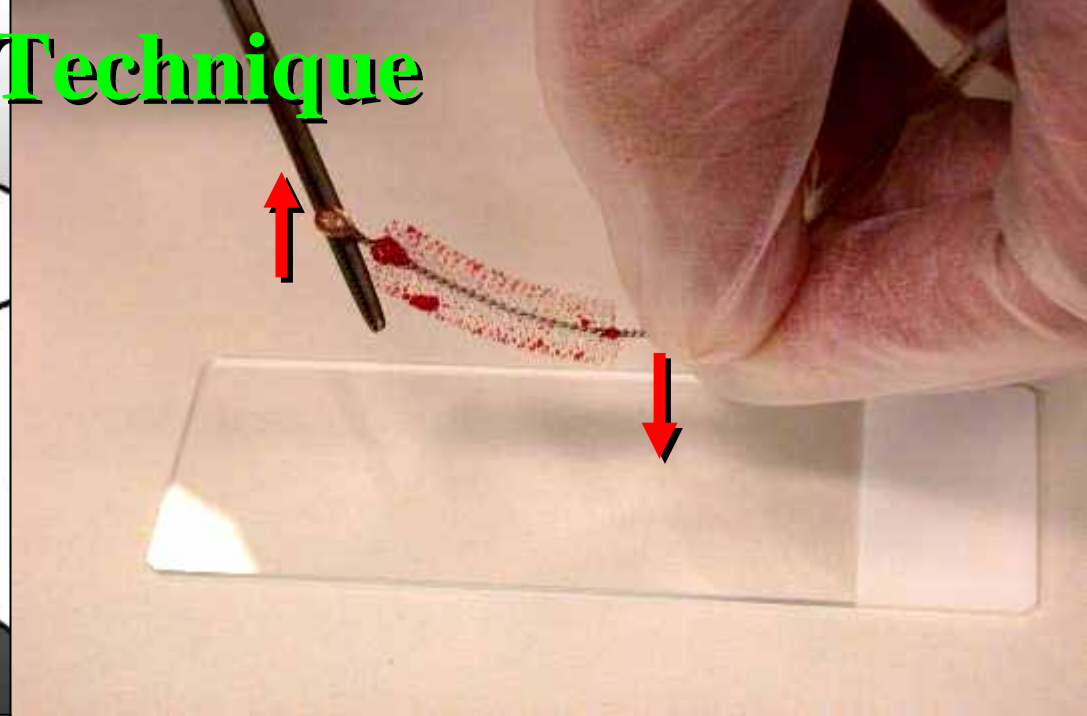
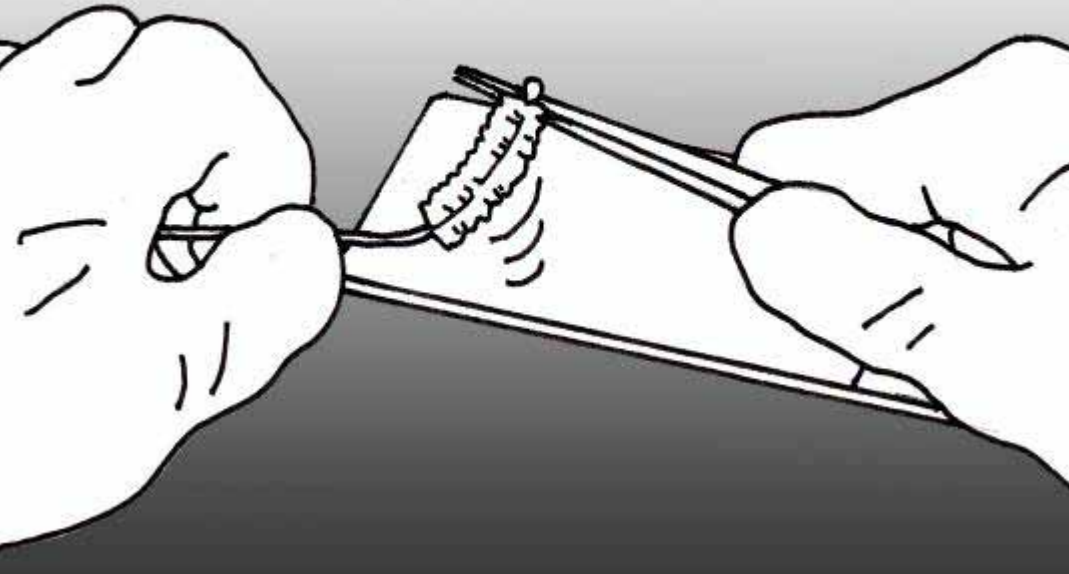
Direct Intrauterine Sampling With Uterobrush: Cell preparation by the 'Flicked' Method

Akemi Fujihara, C.T., I.A.C.,¹ Yoshiaki Norimatsu, C.T., C.M.I.A.C.,²
Tadao K. Kobayashi, Ph.D, C.F.I.A.C.,^{3*} Osamu Iwanari, M.D.,⁴
and Saburou Nagaoka, M.D.¹

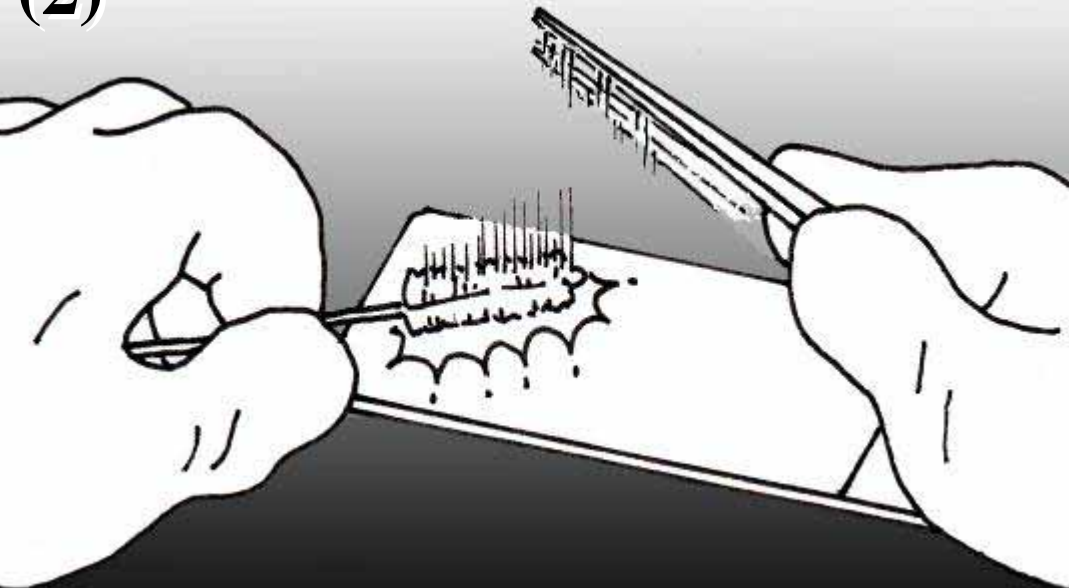
The aim of this study was to evaluate the efficacy of endometrial cytology using the Uterobrush in the collection of samples for the diagnosis of endometrial lesions. The preparation technique for endometrial brushing specimens was also demonstrated. In their earlier study, the authors described the cyto-architectural and all were older than 20 yr (ranging 42.7 yr). Of these, 30 cases from each three methods. Uterobrush samples prepared by the much greater quantity cell clumps than



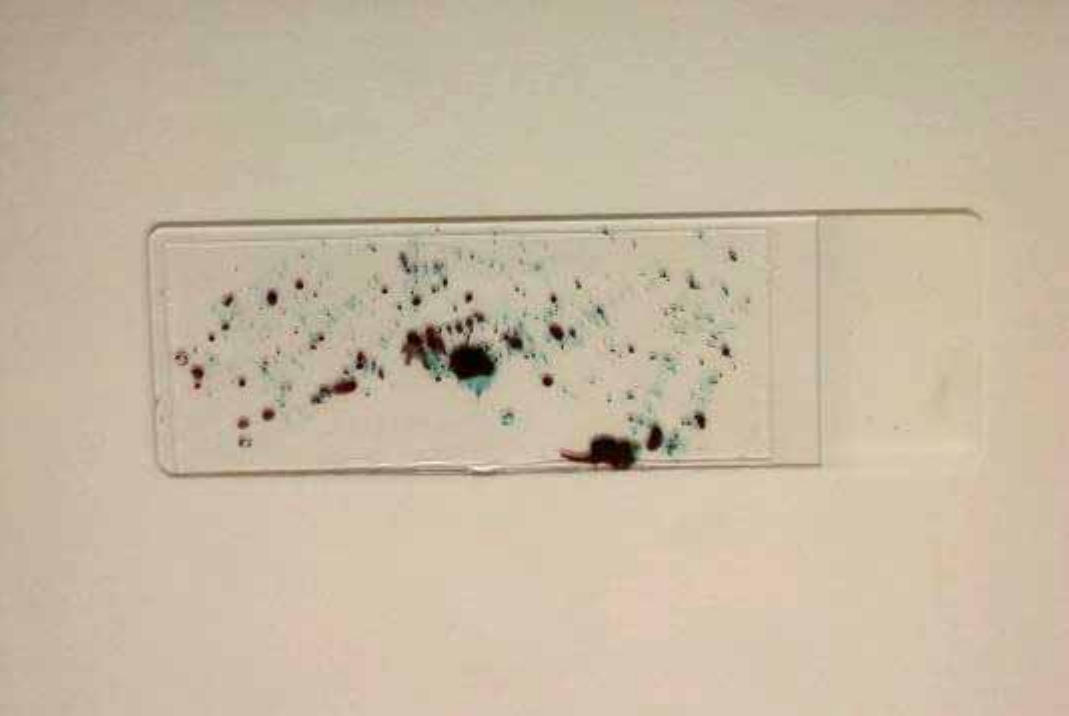
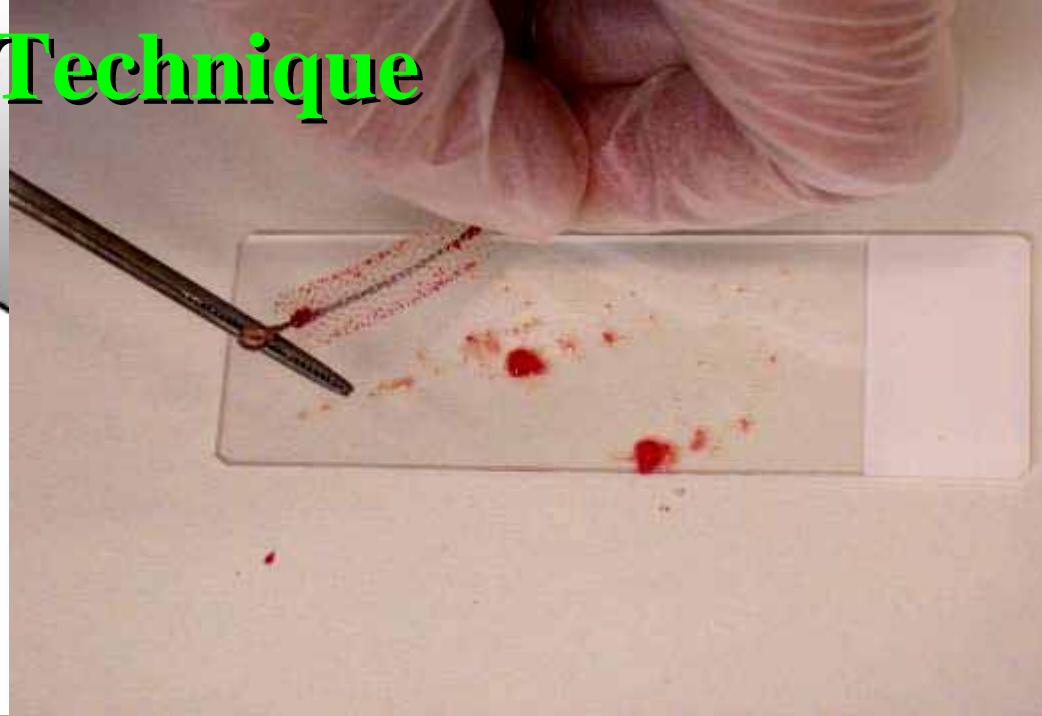
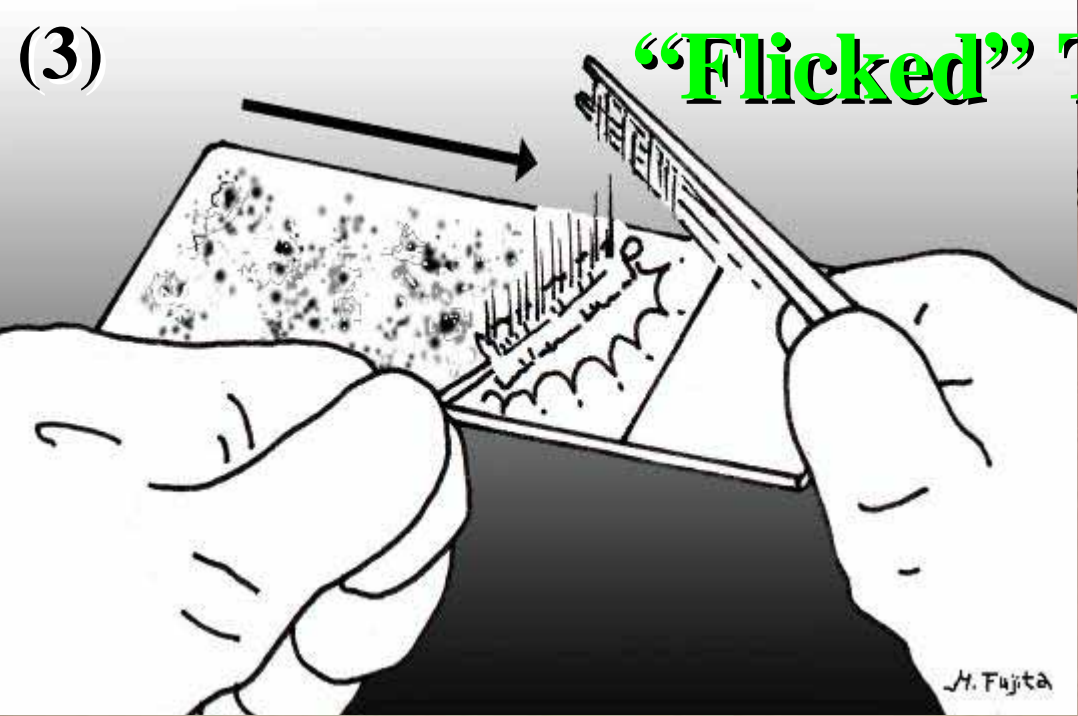
(1) “Flicked” Technique



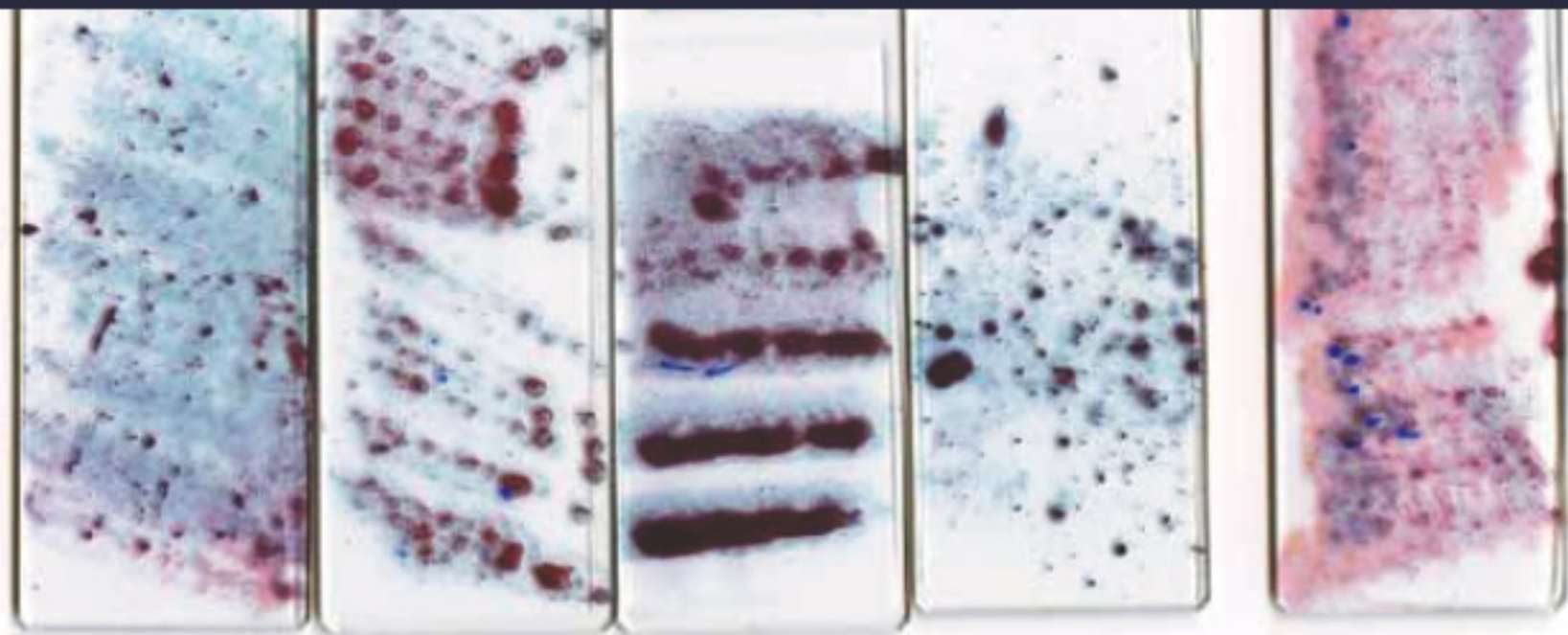
(2)



1. 一方の手でブラシの根元を、他方の手で先の細いピンセットを持つ。
2. ピンセットの先端をスライドガラス上に軽く置き、ピンセットの上にブラシの先を乗せ、**ブラシは下方に、ピンセットは上方に向**かって力を加える。ブラシはピンセットの力で弾かれ、スライドガラス上に強くたたきつけられる。

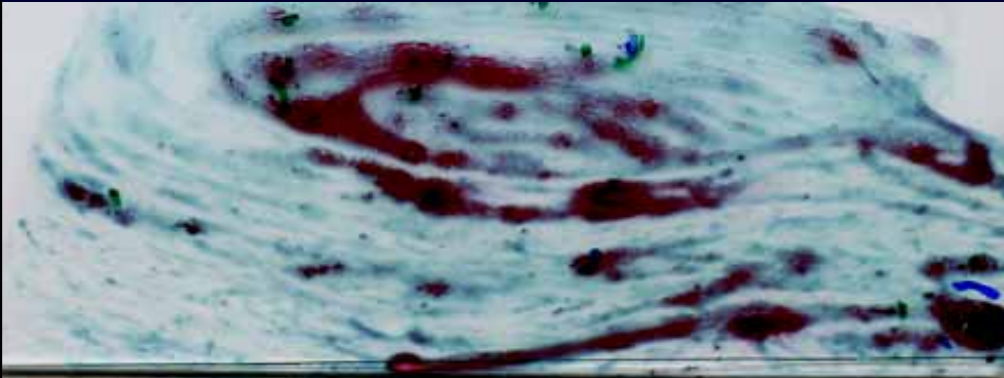


3. スライドガラス上で少しずつ位置をずらしながらこの操作を数回繰り返す。
スライドガラスの直上での操作であるため、周辺への飛び散りは少ない。
スライドガラスを2枚並べて作製すると効率がよい。



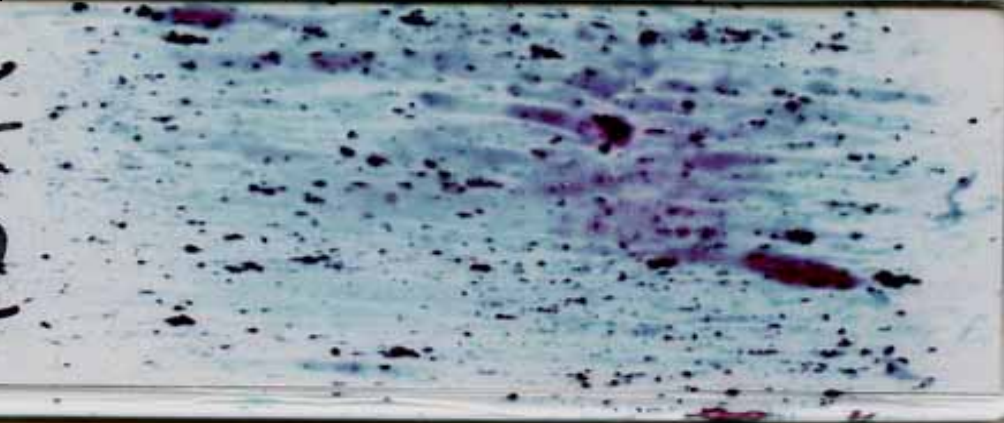
従来法

1

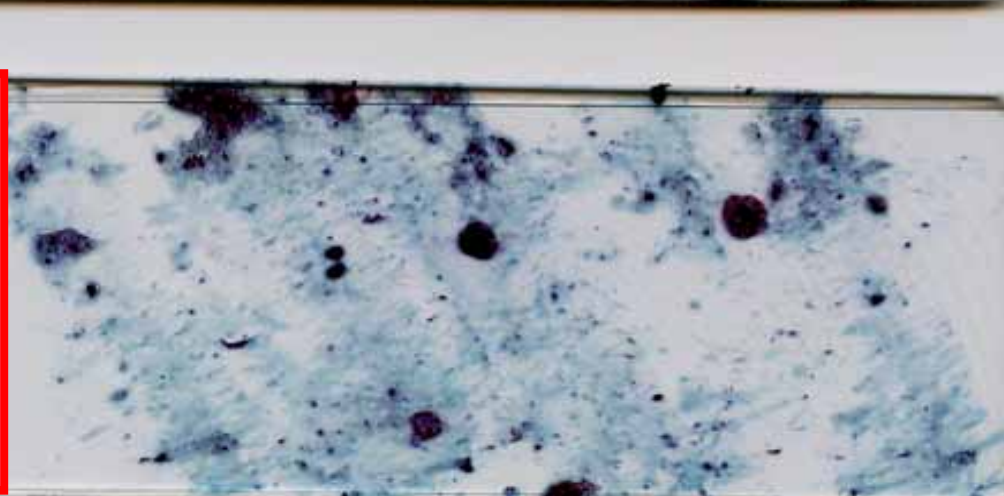


従来法

2



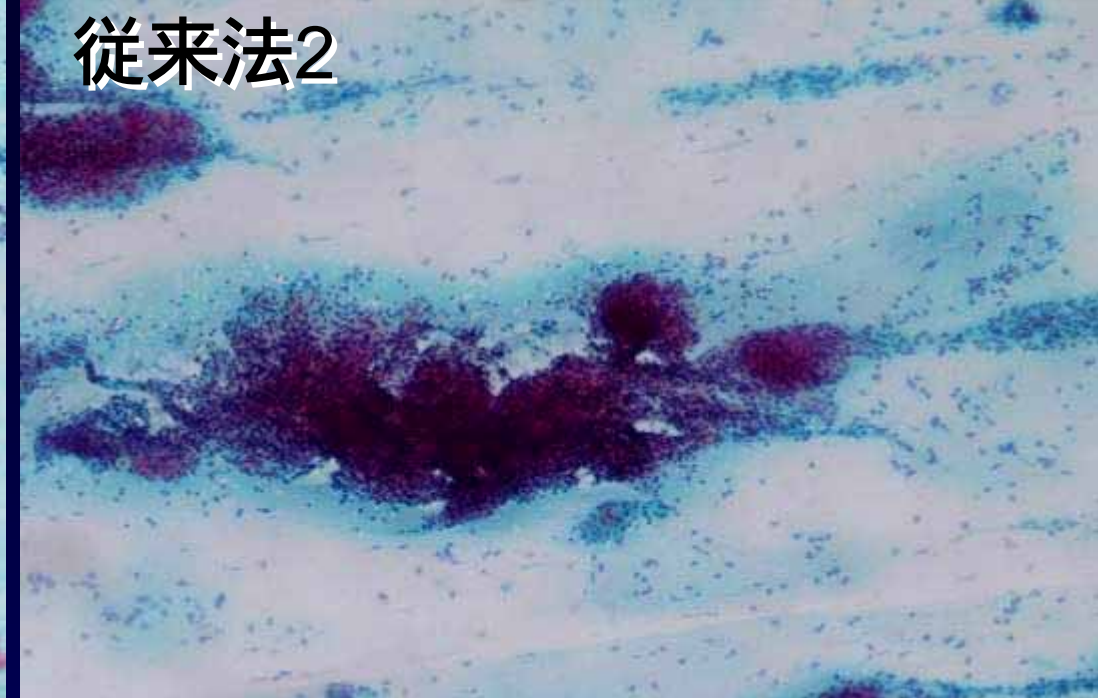
**“Flicked”
Technique**



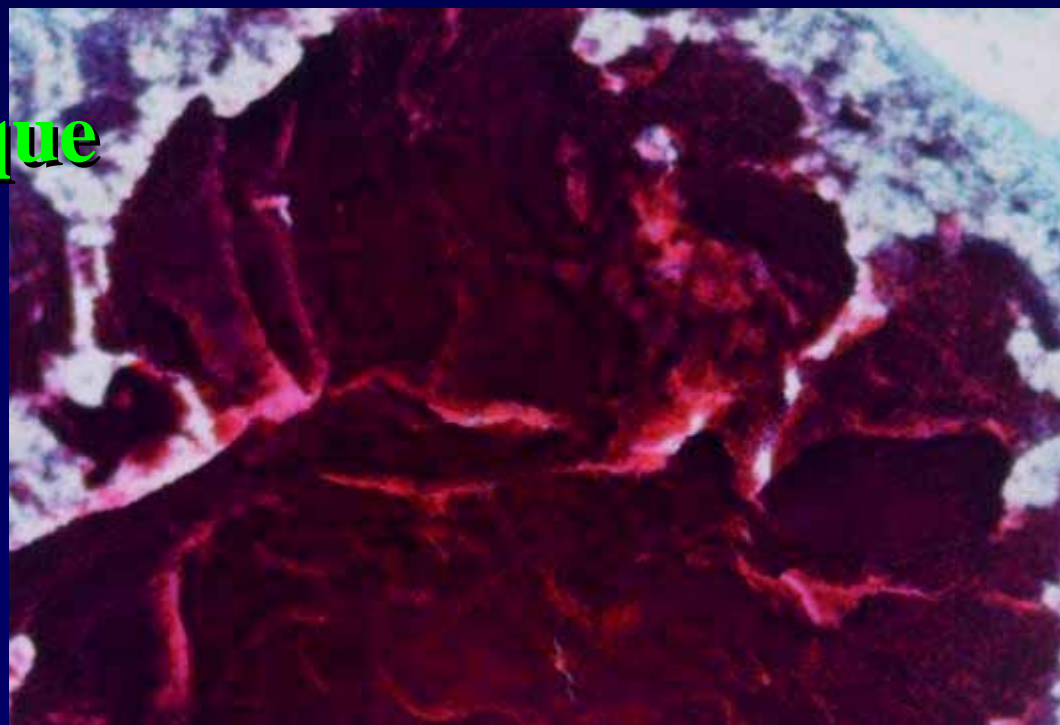
従来法1



従来法2



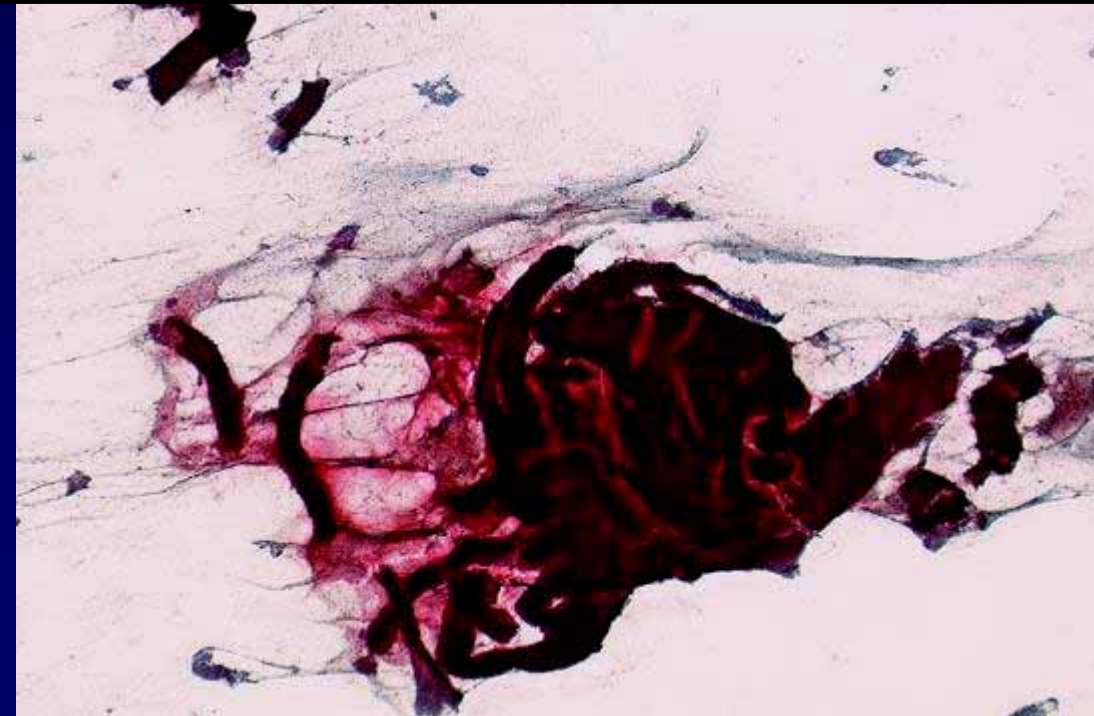
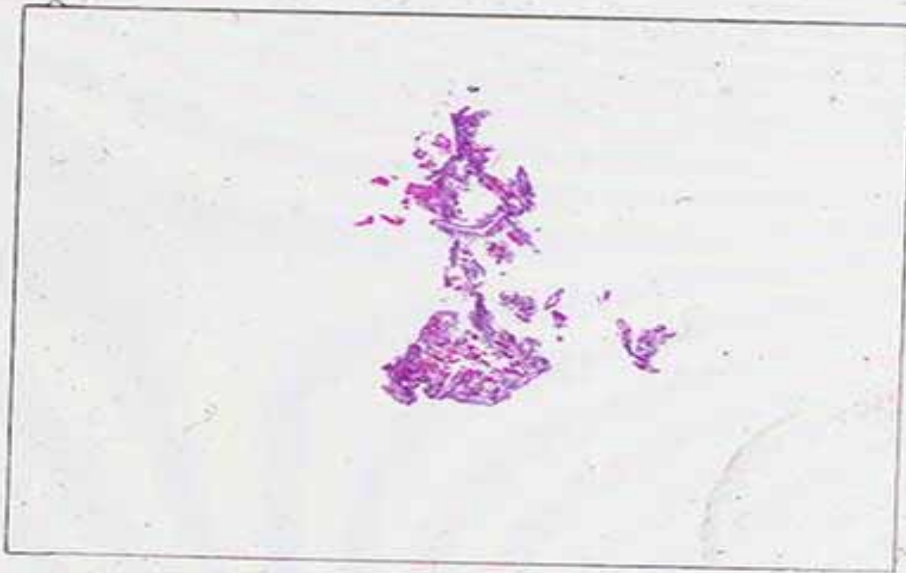
“Flicked” Technique



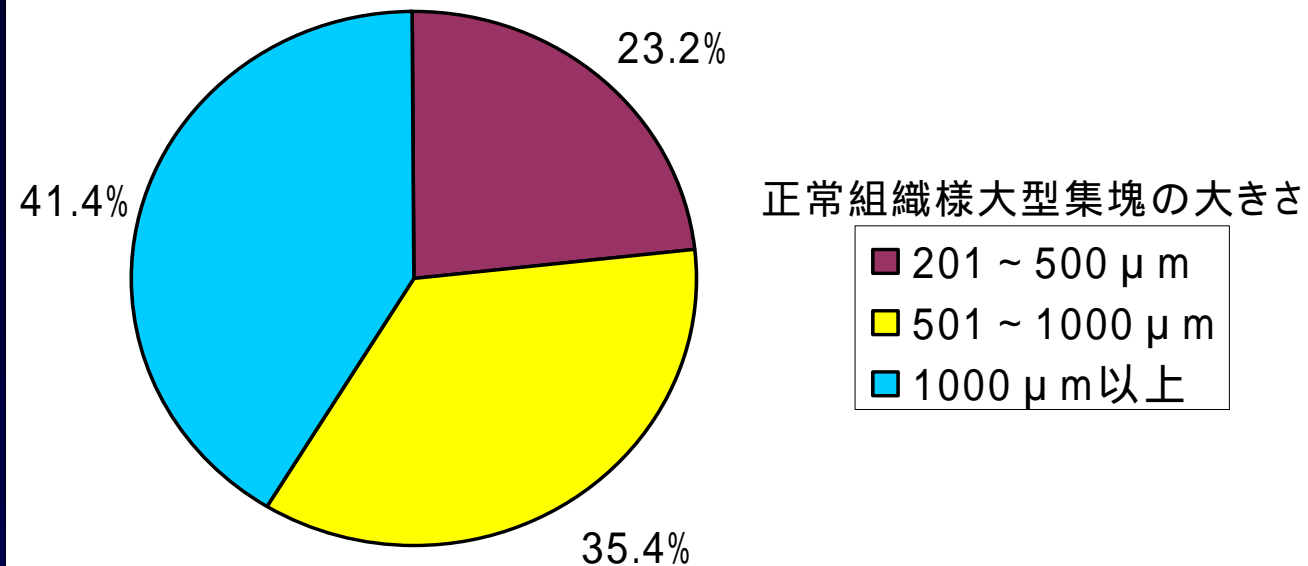
(A) conventional methods



(B) “flicked” technique



“Flicked” Technique



ウテロブラシ 従来法

